

A Recipe of  
*Style, Guave  
and Safety*

Elevate your kitchen  
with Quartz countertops



**KalingaStone**<sup>®</sup>  
TERRAZZO, MARBLE & QUARTZ

BY



The brink of *creativity*  
is yours



Kitchens are the haven for experimentation and love. Just as we combine different ingredients to create a delicious dish, **CMC's KalingaStone** offers a wide range of colour, hue and design choices. It is only fitting that the exotic food matches the extraordinary kitchen.

This Quartz ensures that your kitchen is effortlessly stylish, and always invites large meals with family, friends and laughter.

*Create memories that last a  
lifetime in your kitchen curated  
with KalingaStone Quartz!*

**KalingaStone®**  
TERRAZZO, MARBLE & QUARTZ

Introducing a wave of *freshness* in your kitchen...



With a multitude of features,  
this KalingaStone is set to transform  
your cooking experience.

**KalingaStone®**  
TERRAZZO, MARBLE & QUARTZ



*Durable. Incredible. Stunning.*



## **/ Food safe**

KalingaStone Quartz is certified by NSF International as a safe and secure surface for food. Quartz of purity (%SiO<sub>2</sub>) above 98% adds sturdiness to the surfaces.



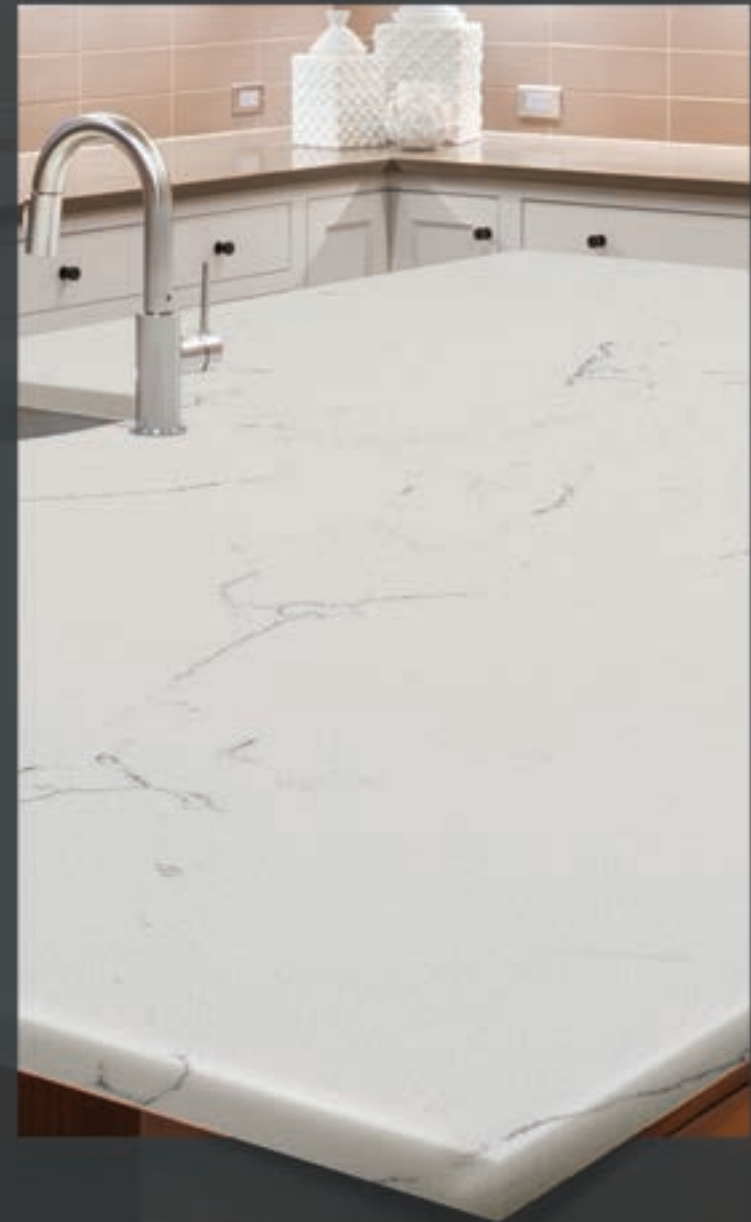
## **/ Resistant to stains and scratches**

Our outstanding collection of Quartz is non-porous and has a low absorption rate of <0.05%, which is even lesser than Natural Granite, making them immune to stains and easy to maintain.



## **/ Impervious to heat**

Remains resistant to heat and cold making them a perfect choice for your kitchen.





# Quartz Collection



# Versatility of Application

The sophisticated nature of the product makes it suitable for all modern living settings.



FLOORING



WALL CLADDING



KITCHEN  
COUNTER TOPS



VANITY  
COUNTER



WINDOW SILL



BATHROOM FLOORING  
AND WALL CLADDING



LIFT LOBBY CLADDING



FURNITURE (counter)



DOOR JAMBS



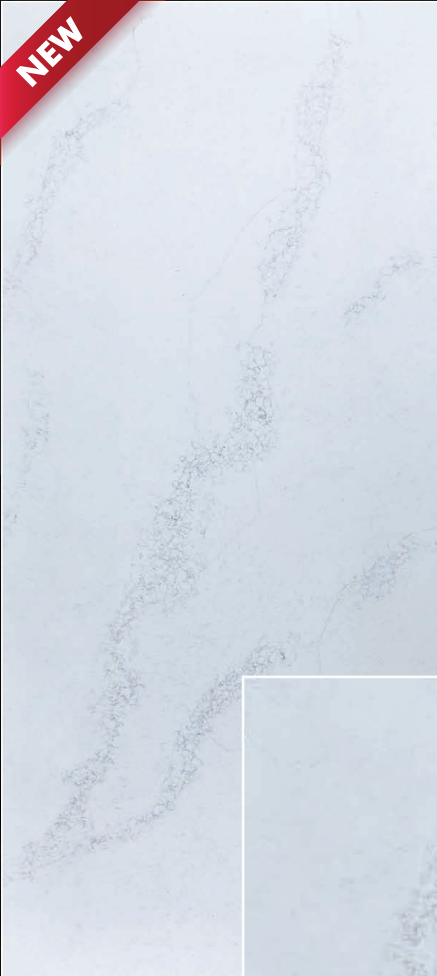
STAIRCASE





*Quartz Collection* / Group 8

**CALACATTA SARCHIO**

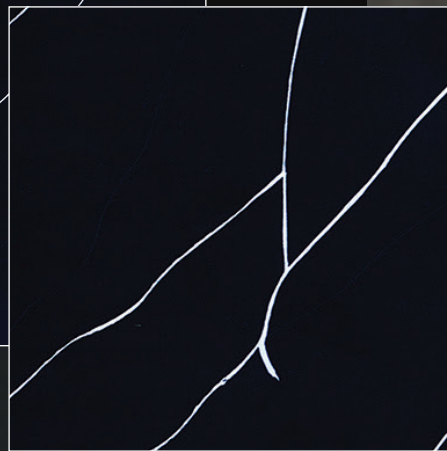




*Quartz Collection* / **Group 8**

**POETIC BLACK**

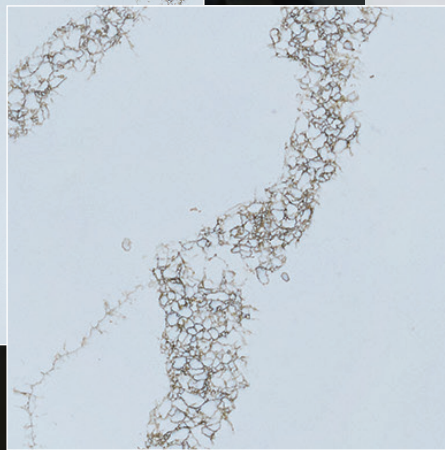
**NEW**



*Quartz Collection* / Group 8

**CALACATTA VOLEGNO**

**NEW**

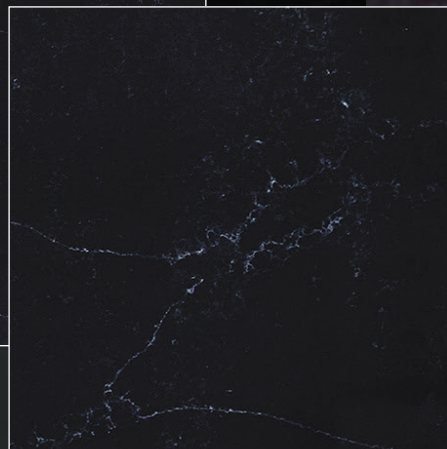




*Quartz Collection* / Group 8

**NERO EMPIRIA**

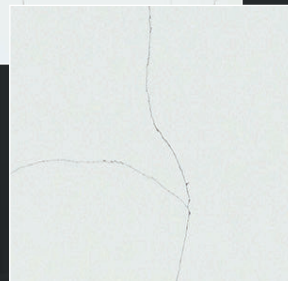
**NEW**



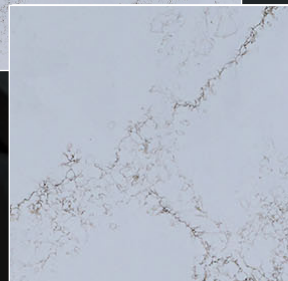


## Quartz Collection / Group 7

**BIANCO VENATINO**



**CALACATTA IMPERIAL**



# Quartz Collection / Group 7

**CALACATTA ANTICO**



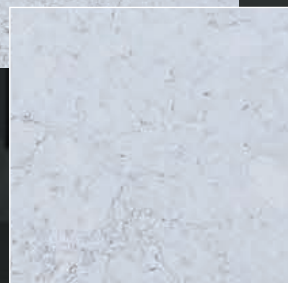
**CALACATTA MINERVA**



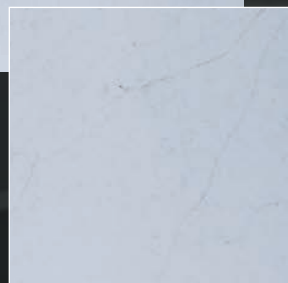
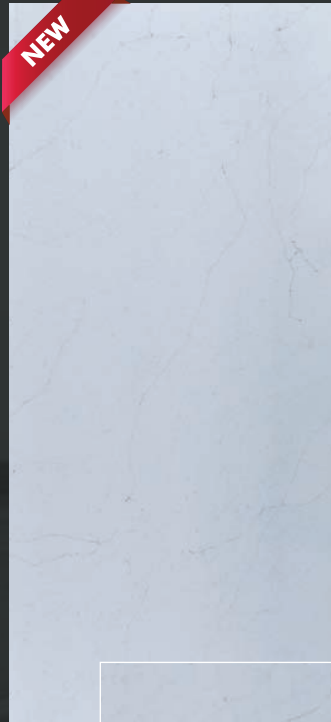


*Quartz Collection* / **Group 7**

**FJORD**



**CALACATTA SUPER**

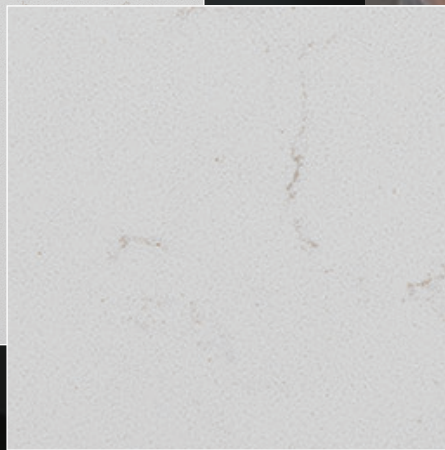




*Quartz Collection* / Group 6

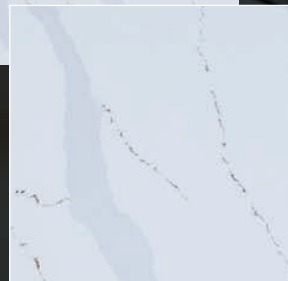
**CALACATTA RIVER GLAN**

**NEW**

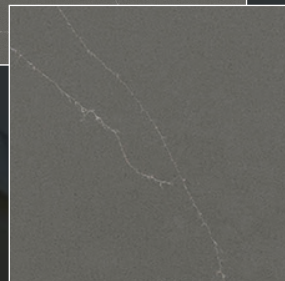
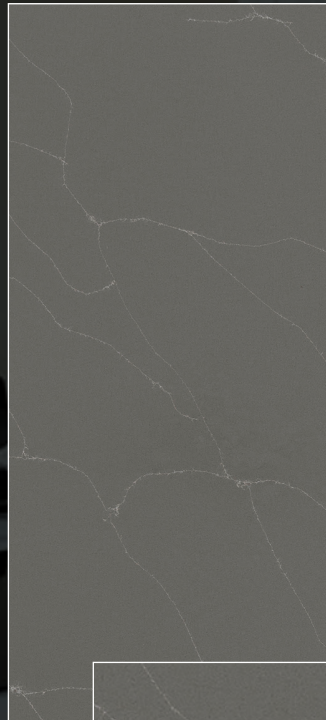


*Quartz Collection* / Group 6

CALACATTA LAZZA



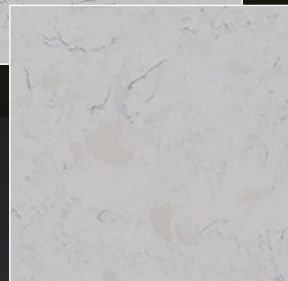
PIETRA GREY



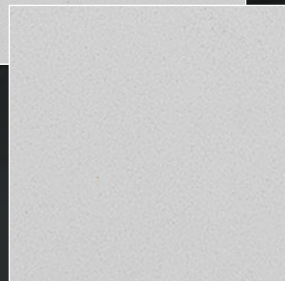


## Quartz Collection / Group 5

**CLASSIC PEARL**



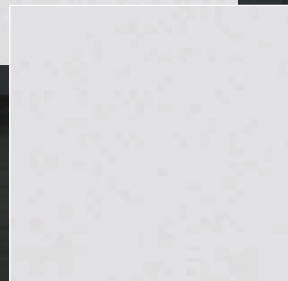
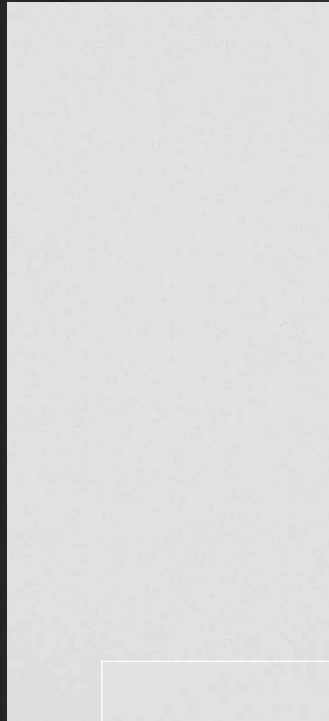
**BIANCO SUPERIORE**



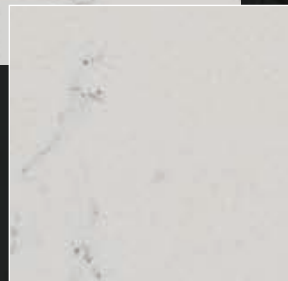


*Quartz Collection* / **Group 5**

**NEW EXTRA WHITE**

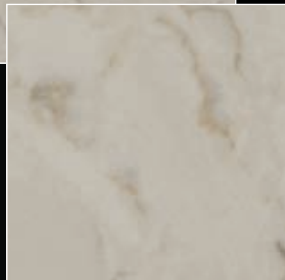


**BIANCO GIOIA**



*Quartz Collection* / **Group 5**

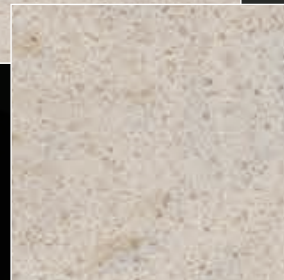
**CREMA GOLD**



**BERMINGHAM**



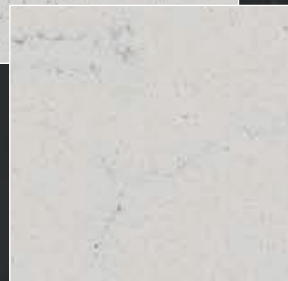
**NISLEY**



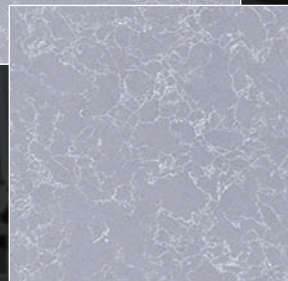
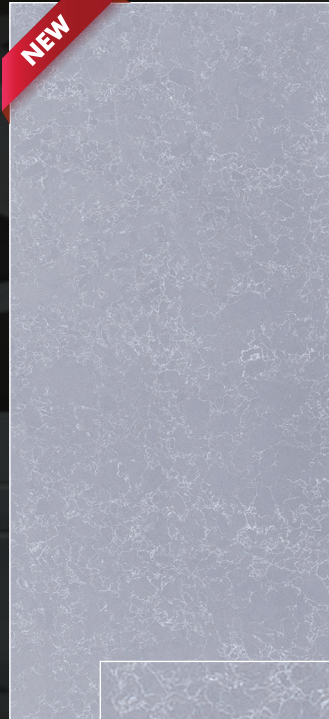


*Quartz Collection* / **Group 4**

**BIANCO CARRARA**



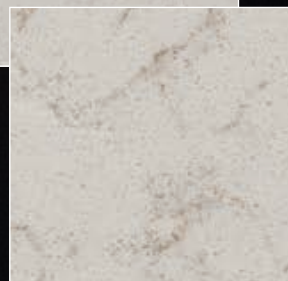
**COSMOPOLITAN**



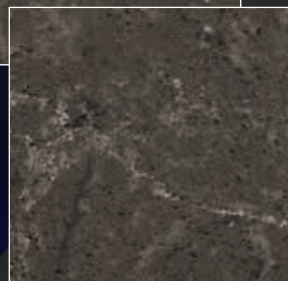
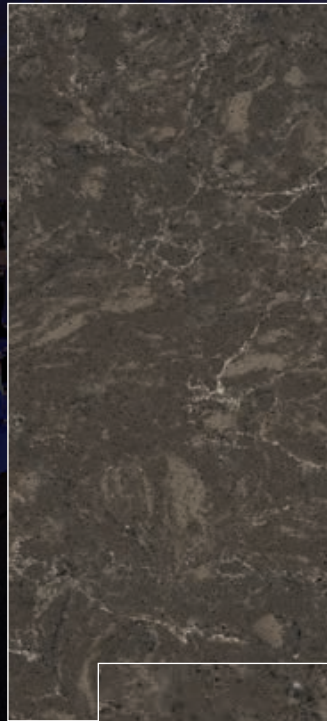


*Quartz Collection* / **Group 4**

**CREMA VENATO EXTRA**



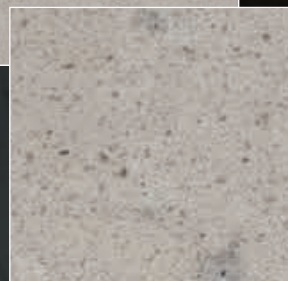
**GRIS VENATO**



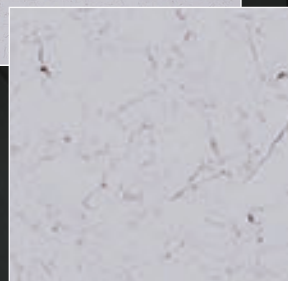


# Quartz Collection / Group 4

**GREY FJORDO**



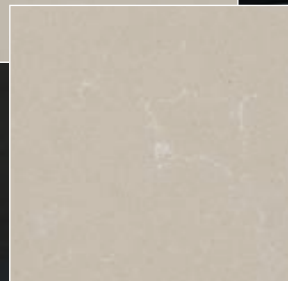
**BIANCO ORO**



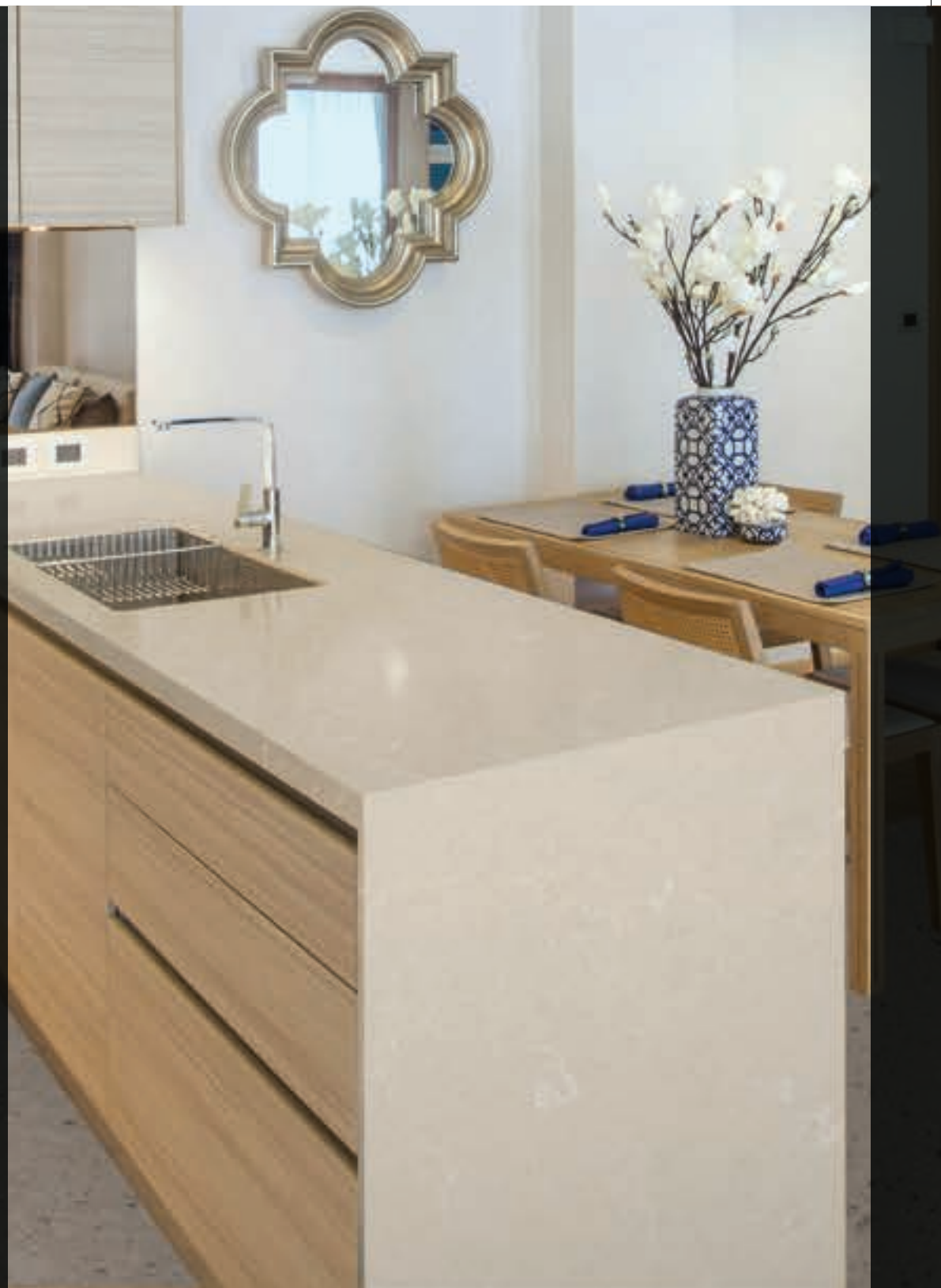


*Quartz Collection* / Group 4

NOAH

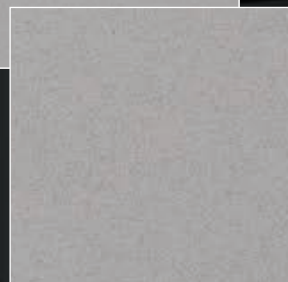


GRIGO ORO

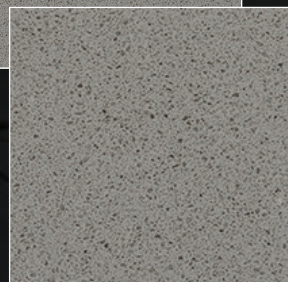


*Quartz Collection* / **Group 3**

**CONCRETE**



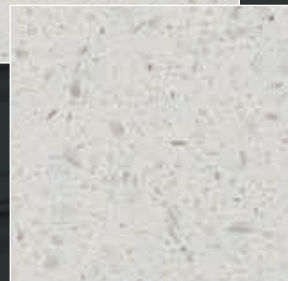
**CEMENT**



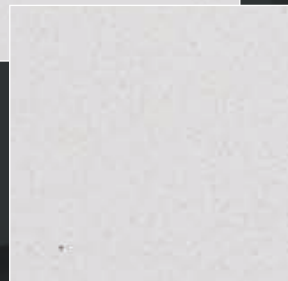


*Quartz Collection* / Group 3

**BIANCO DIAMANTE**



**BIANCO CLASSIC**

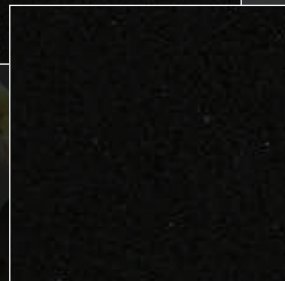


*Quartz Collection* / **Group 3**

**SILVER GREY**



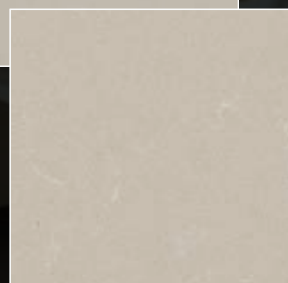
**NERO CLASSIC**



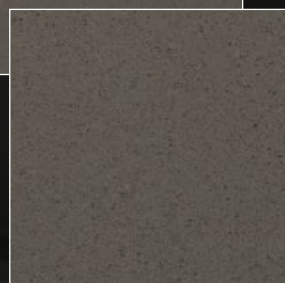


*Quartz Collection* / Group 3

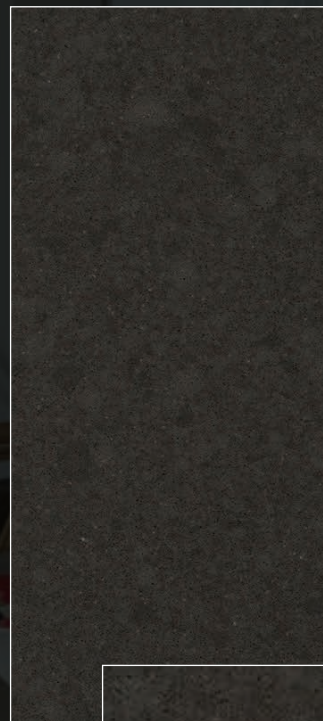
NOAH



MILANO



METROPOLITAN

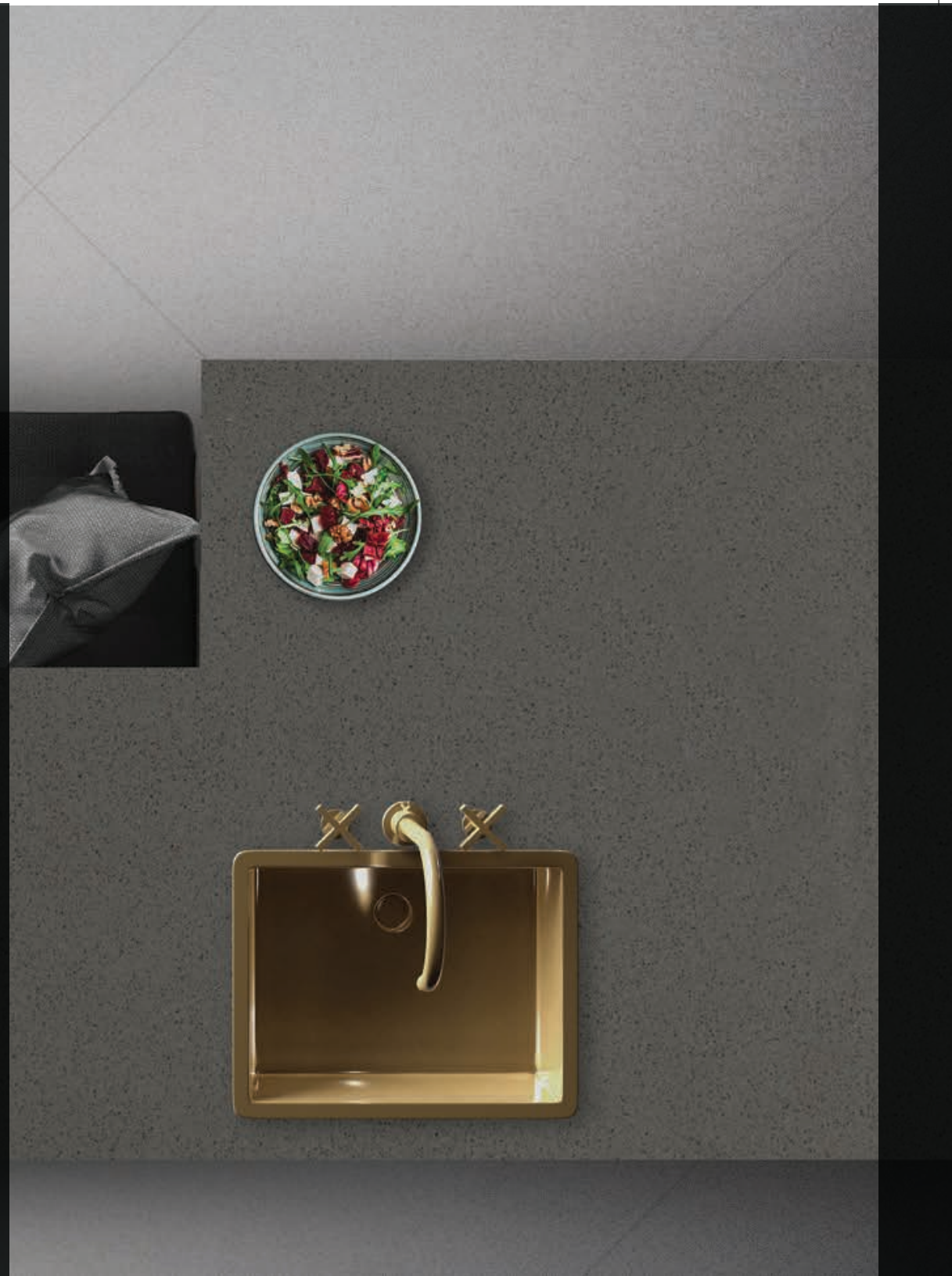
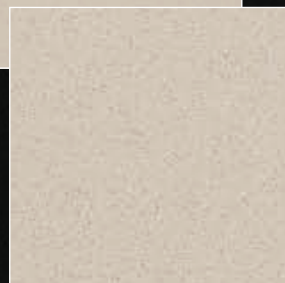


# *Quartz Collection* / Group 3

**ASH GREY**



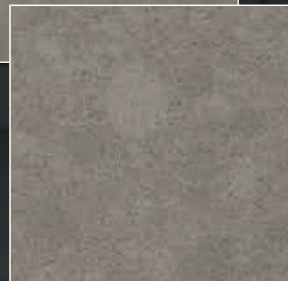
**CLASSIC BEIGE**



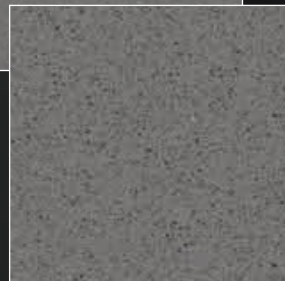


*Quartz Collection* / **Group 3**

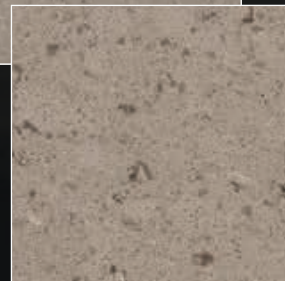
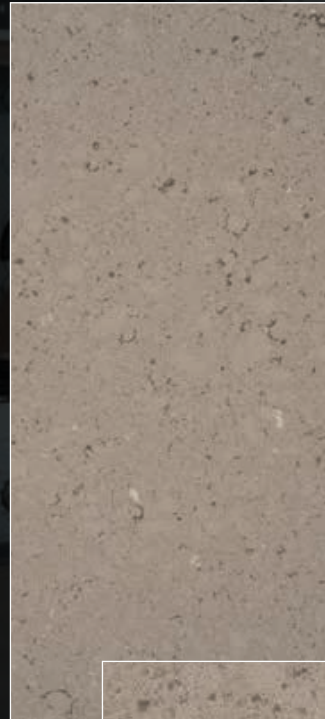
**CHANDAN**



**GRIGIO LONDRA**



**REPEN**

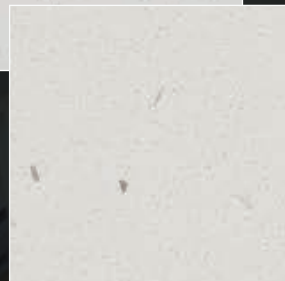


# Quartz Collection / Group 3

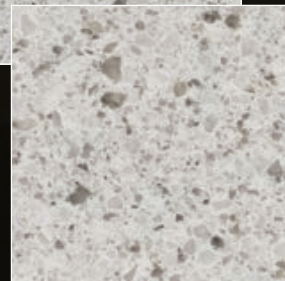
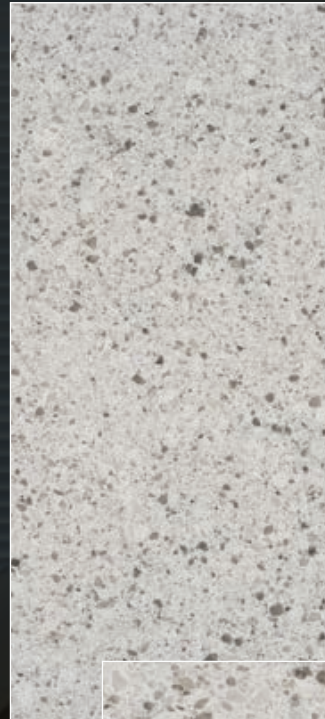
USH



VETRO BIANCO



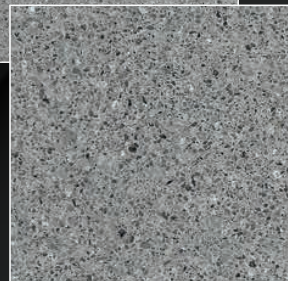
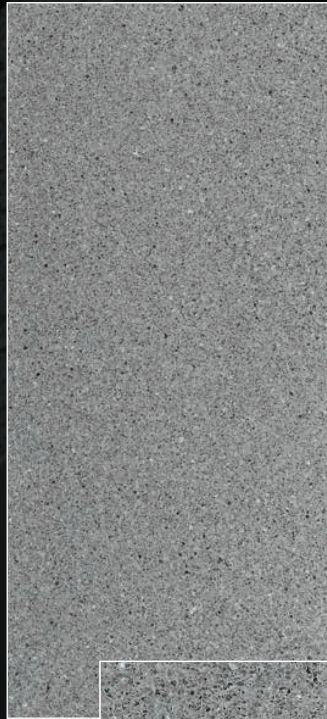
PEPPERCORN WHITE





*Quartz Collection* / Group 3

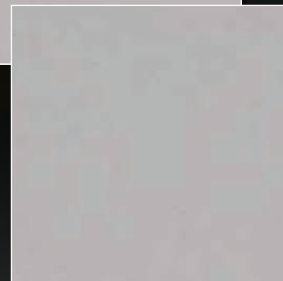
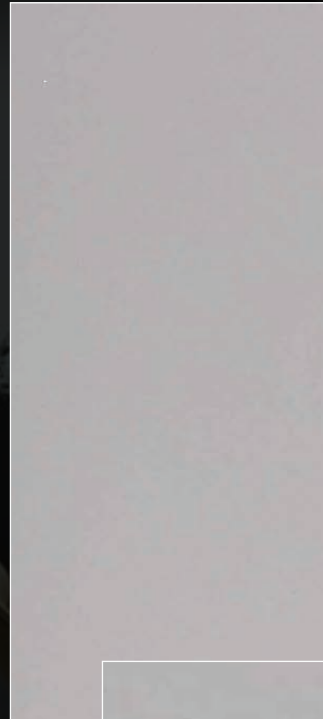
PEARL GREY



TOASTED ALMOND



STELLAR WHITE



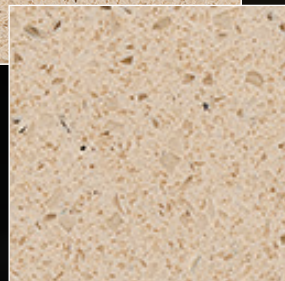


*Quartz Collection* / **Group 2**

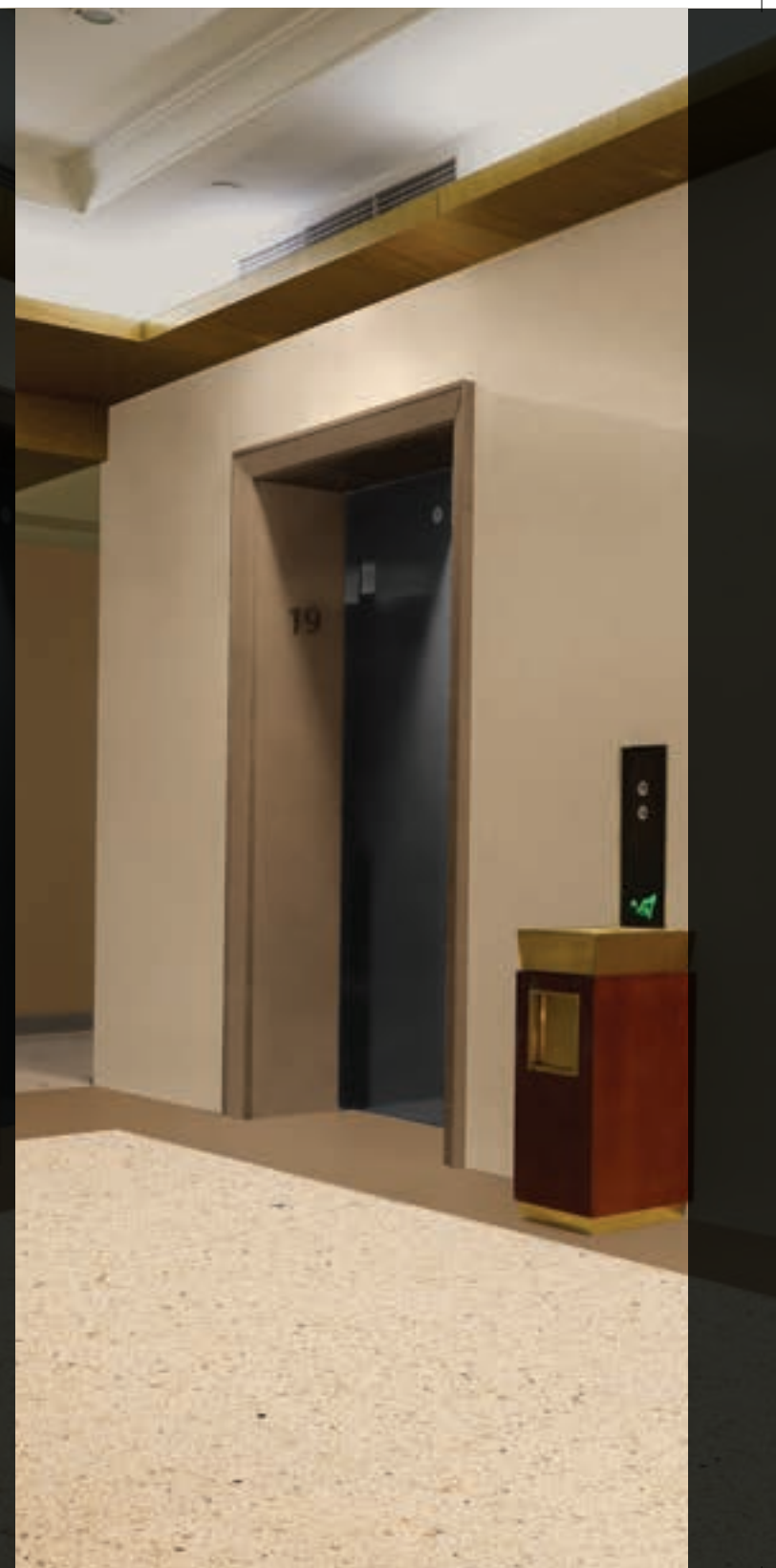
**BEIGE DIAMANTE**



**SANDY DIAMANTE**



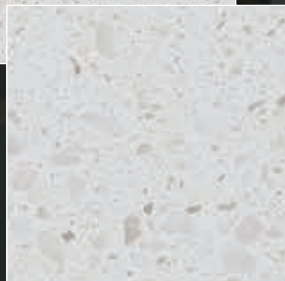
**DESERT BROWN**



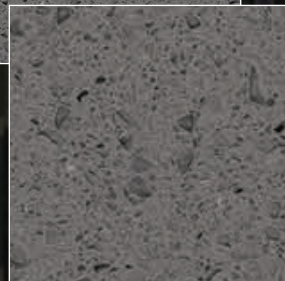
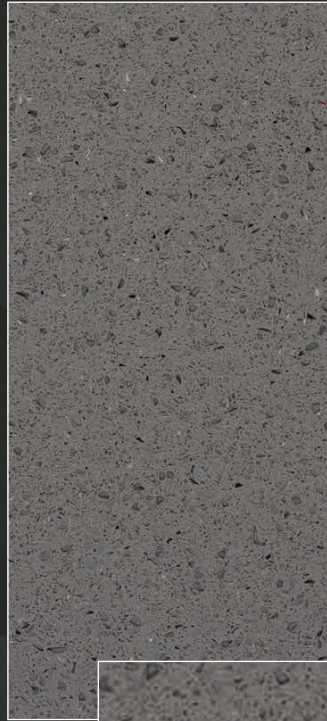


## *Quartz Collection* / Group 2

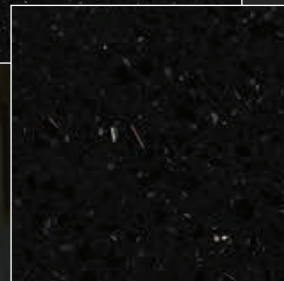
**CREMA VERONA**



**GRIGIO DIAMANTE**



**NERO DIAMANTE**





*Quartz Collection* / Group 2

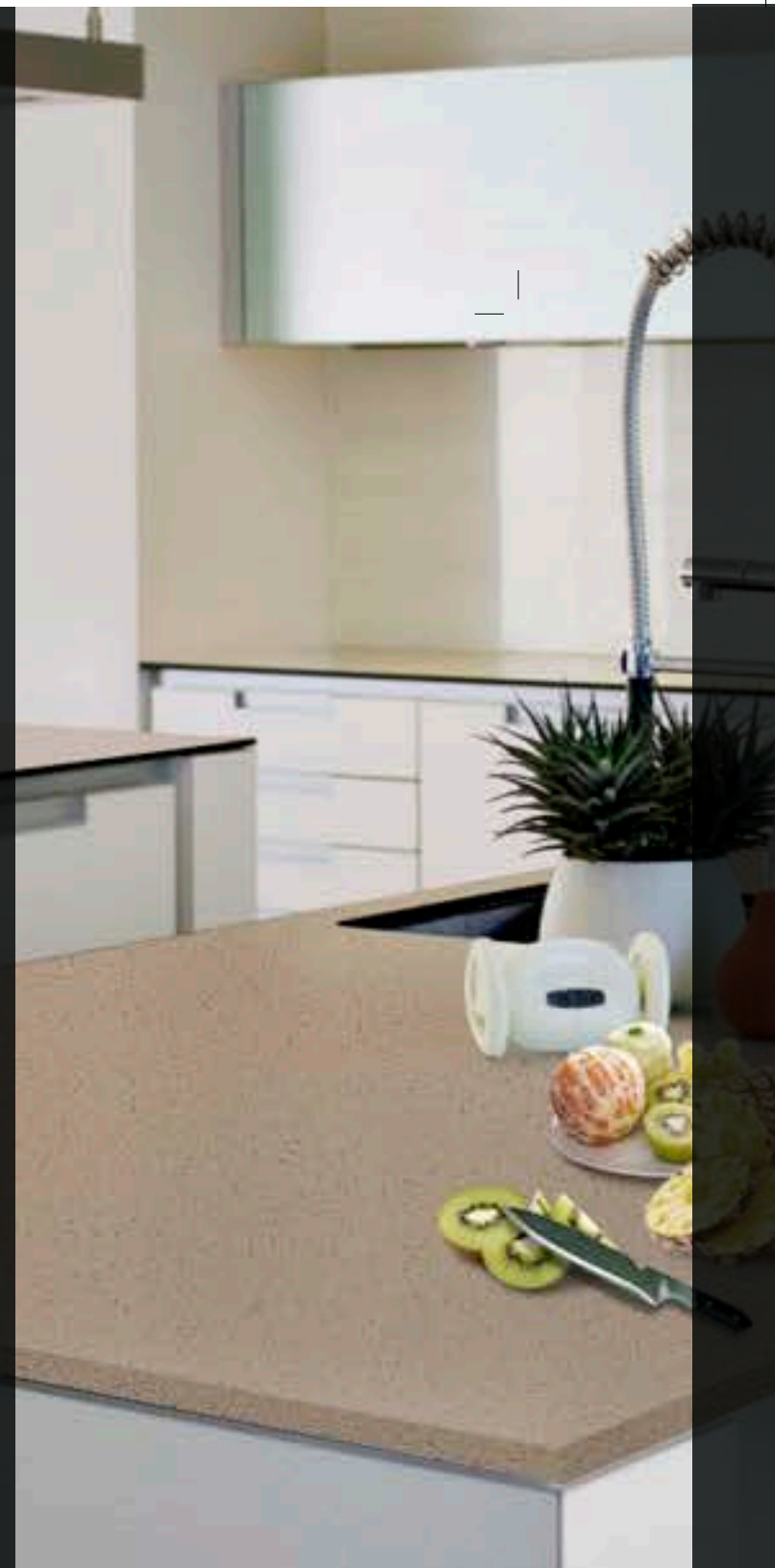
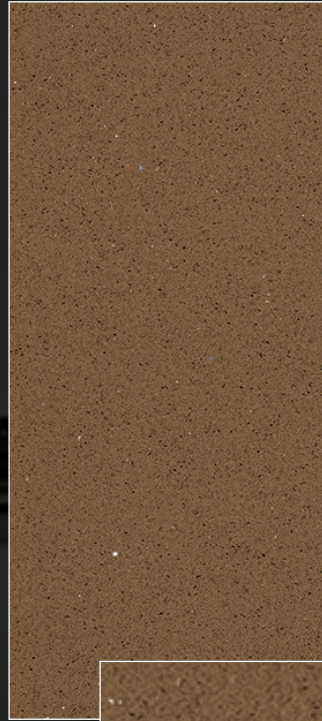
**MOCCA CRÉME**



**BEIGE TUSCANY**



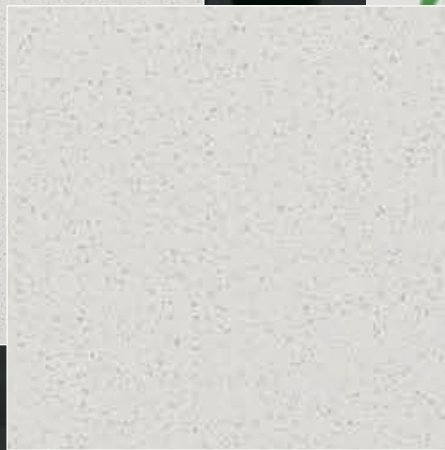
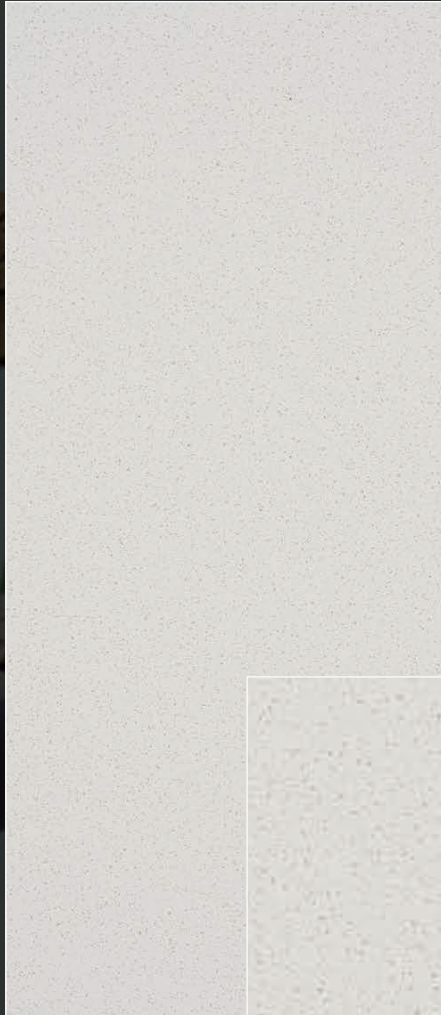
**MOCCA DIAMANTE**





*Quartz Collection* / **Group 1A**

**BIANCO NEVE**



**KalingaStone®**  
TERRAZZO, MARBLE & QUARTZ

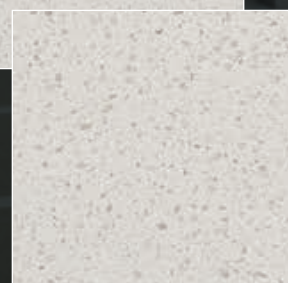
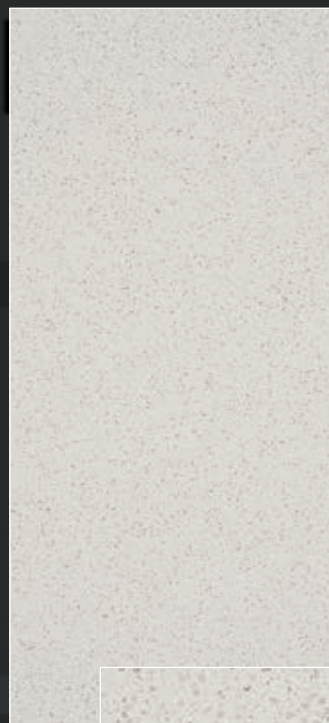


# Quartz Collection / Group 1

NEW BEIGE



BIANCO CRISTALLO



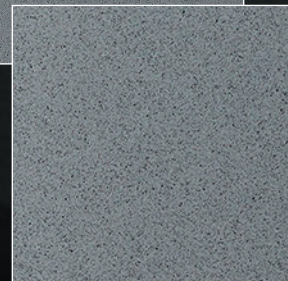


# Quartz Collection / Group 1

CREMA SCURO



NEW GREY



Quartz Collection /

## Ultimate Protection & Exceptional Products

To elevate the spectacular selection of KalingaStone Quartz, the slabs are protected with Microban, an antibacterial technology to Shield the surfaces from developing microbes.

**Introducing the feeling of safety and beauty into your homes, we strive to create the perfect combination of aesthetics and efficiency!**



Cleaner for longer



Combats 99.99% bacterial growth



Minimised risk of cross contamination improves hygiene



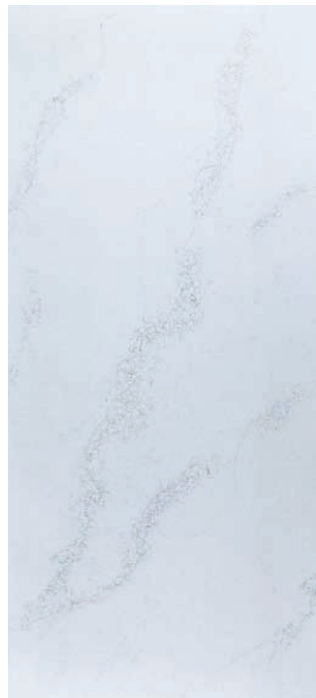
Protection lasts for the usable lifetime of the product

Tested to ISO 22196, with proven efficacy against the growth of E. coli and S. aureus





*Quartz Collection* / Microban Protected



CALACATTA SARCHIO



BIANCO VENATINO



BIANCO NEVE



BIANCO CLASSIC



FJORD

*Quartz Collection* / Microban Protected



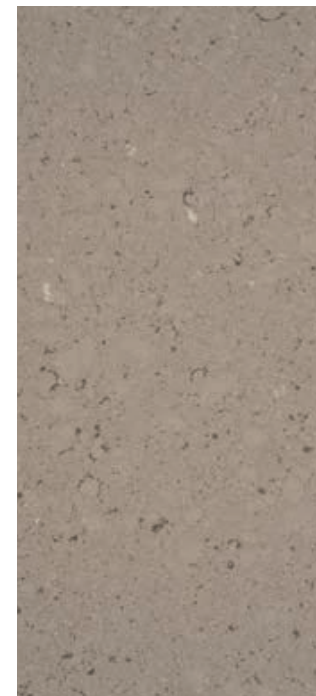
BIANCO CARARA



CREMA VERONA



CLASSIC BEIGE



REPEN



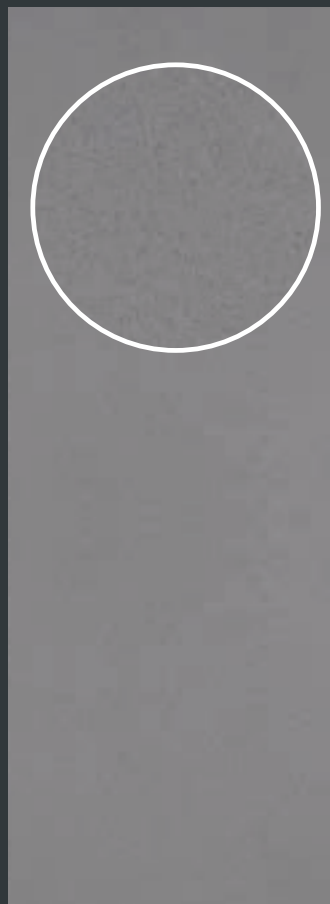
CHANDAN



# *Quartz Finishes*



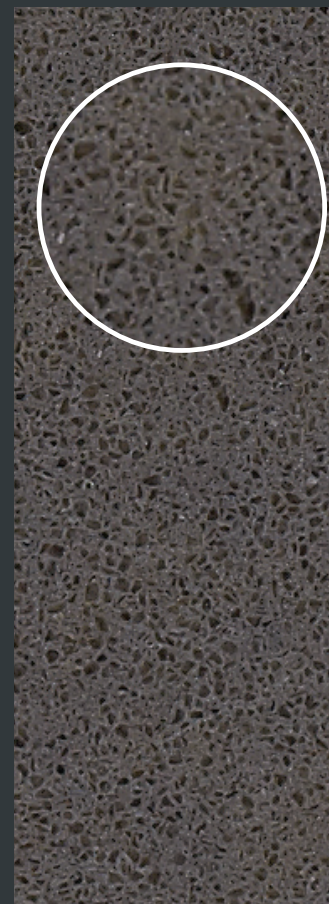
DISTRESS



LEATHER



HONED



NALICO

# Technical Specifications /

Test Performed	Test Standards	Results
App. Density kg/dm <sup>3</sup>	ASTM C 97	> 2.1
	EN14617-1	> 2.1
Water Absorption %	ASTM C 97	< 0.05
	EN14617-1	< 0.05
Modulus of Rupture (Mpa) (Dry/Wet)	ASTM C 99	55 - 65
Dimensional Stability	EN14617-12	Class A
Flexural Strength (Mpa)	ASTM C 880	40 - 60 (Dry/Wet)
	EN14617-2	50 - 60
Impact Resistance (joule)	EN14617-9	5 - 14,5 joule
Compressive Strength (Mpa)	ASTM C 170	150 - 250 (Dry/Wet)
	EN14617-15	170 - 240
Frost Resistance	DIN 52104	Complies with Standard
Surface Hardness (Moh's Scale)	EN 101	6.0 - 7.0
Abrasion Resistance	ASTM C 241	Min 25,0
	ASTM C 1243-93	Volume of Chord : V= 60,0 - 107,9 mm <sup>3</sup>
	EN 14617-4	Chord Length = 21,0 - 22,5 mm
Stain Resistance	ANSI Z 124.6	Pass
Wear & Cleanability	ANSI Z 124.6	Pass
Cigarette Test	ANSI Z 124.6	Pass
Resistance to Acids	ASTM C 650	Not Affected
Chemical Resistance	ANSI Z 124.6	Pass
	EN14617-10	Class C4
Boiling Water Resistance	NEMA LD3-3.5	Pass / No effect
High Temperature Resistance	NEMA LD3-3.6	Pass / No effect
Linear Thermal Expansion (30 °C - 100 °C) °C <sup>-1</sup>	ASTM C 372-94	3,0 - 5,0 X10 <sup>-3</sup> per °C
	EN14617-11	13 - 26,0 X 10 <sup>-3</sup>
Radiation	GB 6566-2010	Complies with requirement of standards
Fire Classification	EN 13501-1	Wall Cladding: B-S1-d0, Flooring & Stairs: B-fl-S1
Surface Burning	ASTM E 84	Class A
Slip Resistance	EN 14231	Wet: 13-21 SRV , Dry: 43-53 SRV
Thermal Shock Resistance	EN14617-6	No Visual defects after 20 cycle, Loss in Mass = 0,04% - 0,07%, Loss in flexural strength= 6,0% - 9,5%
Freeze & Thaw Resistance	ASTM C 1026	No damage after 20 freeze-thaw cycle
	EN14617-5	No defect after 25 freeze-thaw cycles.
Glossiness Reflection	%	55 - 70
Surface Slip Resistance HONED 400	DIN 51130	R9
Thermal Conductivity	EN 12664	0,435 - 0,485 W/(m,K)
Static Co-efficient of Friction	ASTM C 1028	Dry: 0,8 , Wet: 0,6

Quartz Slab Sizes: 315 X 145 cm / 325 X 165 cm / 330 x 200 cm

## CERTIFICATIONS:





# Available Edges /



Straight with  
Radius Eased Edges (1)



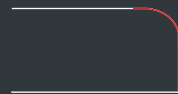
Straight with  
Chamfer Eased Edges (1)



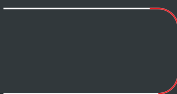
Pencil Round (2)



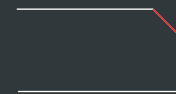
Double  
Pencil Round (2)



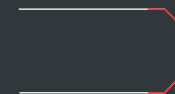
Radius (3)



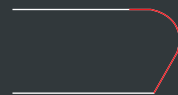
Double Radius (3)



Chamfer (3)



Double Chamfer (3)



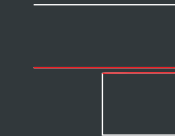
Stair Tread



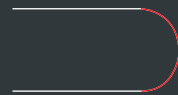
Waterfall  
(or Triple Waterfall)



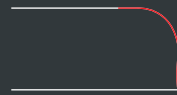
Platner  
(or Knife Edge)



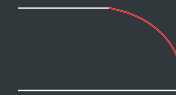
Laminated (4)



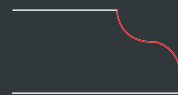
Full Bullnose



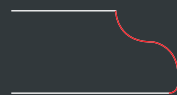
Half Bullnose



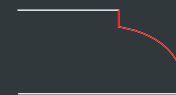
Demi Bullnose



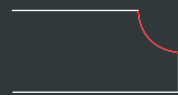
Ogee



Ogee Roundover



Dupont



Cove (3)



Cove Ogee



Cove Dupont

EXPLORE OVER 150  
*Possibilities*

**KalingaStone®**  
TERRAZZO, MARBLE & QUARTZ

The artistic brilliance of KalingaStone, an engineered Marble, Quartz and Terrazzo range, has helped bring visions to life across globe. The design possibilities are limitless with an ethereal collection of over 150 designs and shades. Over the years, the brand has made its global presence prominent in 66 countries through its unmatched quality and its adherence to International standards.

Being awarded the 'Indian Power Brand' in the Marble and Stone category and 'Best Innovative Products' by Indian Institute of Architects, Mumbai in 2010 stands as a testimony to the superior artistry and pedigree of KalingaStone.



Engineered  
BY  
CUTTING-EDGE  
TECHNOLOGY /



The newest KalingaStone Quartz line is created using state-of-the-art technology featuring a fully automated production line, starting from feeding the raw material to the stacking of the finished slabs. The production facility, with an installed capacity of 35,000sq.mt per month is capable of producing Quartz slabs in the 'superjumbo' dimensions of 3300 x 2000mm.

*Engineered  
with The Best*

INTEREST OF THE  
ENVIRONMENT  
AT HEART

CMC was, has, and will always continue to do everything in its potential to ensure a healthier planet. What makes CMC a highly environmentally conscious company is its Go Green initiatives, optimum use of natural resources, the utilization of more than 90% of re-cycled materials and the continuous re-use of water from various different processes.






## DOMESTIC PROJECTS /

**DELHI** • Park Inn • Ambience Public School • Bharti Commercial Tower • TV Today Corporate Office • Delhi International Airport • National Press Centre • ONGC - Corporate Office • Vangard Housing • Great India Place Mall • Central Square Mall • Safdarjung Hospital • **DAMAN** • Thunder Bird Resort • **GUJARAT** • **Ahmedabad** • The Fern • Holiday Inn Express • TransStadia Football Stadium • Novotel • **Gandhinagar** • GIFT City • **Vadodara** • Knowledge City • **GOA** • CIPLA • Holiday Inn Resort • **JAMMU AND KASHMIR** • **Srinagar** • Lalit Hotel • **KARNATAKA** • **Bangalore** • RMZ Mall • Virtuous Mall • **Coimbatore** • Akshaya Homes • **KERALA** • **Cochin** • Hotel Crown Plaza • **MAHARASHTRA** • **Mumbai** • Orchid Hotels • INOX Leisure Ltd • State Bank of India • CIDCO Exhibition Centre • Bharat Diamond Bourse • Phoenix - Infocity • Indiabulls Financial Centre • Essel School • Reliance Industries Ltd • Mumbai International Airport • CRISIL • Financial Technologies • Bank of India • Income Tax Building • Bombay Hospital Trust • Seven Hills Hospital • Sir H. N. Reliance Foundation Hospital (Hurkisonadas Hospital) • St. Andrews School • Oberoi Mall • Korum Mall • **Navi Mumbai** • Navi Mumbai Municipal Corporation Building • MGM Hospital • **Pune** • Meridien Hotel • Marriott Courtyard • **TAMIL NADU** • **Chennai** • Olympia Tech Park • Cognizant Technologies • Palm Grove Beach Hotels • **Nagercoil** • Pothys Textile Showroom • **PONDICHERRY** • SPI Cinemas • **PUNJAB & HARYANA** • PVR (Elante) • **Gurgaon** • HCL • Google office • **RAJASTHAN** • **Jaipur** • Manipal Hospital • **Udaipur** • Hotel Park Plaza • **TELANGANA** • **Hyderabad** • Salarjung Museum • Infosys • Waverock • **UTTAR PRADESH** • **Noida** • NIIT • NCR • Havells India Ltd • **Lucknow** • Halwasia Mall • **UTTRAKHAND** • Times Square Mall • **WEST BENGAL** • **Kolkatta** • Srijan IT Park • J.W. Marriott • NIBMG • **ALL INDIA** • Nexa Maruti Showroom • More than 500 Residential & Commercial Projects

# Exported To 66 Countries/

## Exporting Countries

- 
- Argentina
  - Australia
  - Bangladesh
  - Bahrain
  - Belgium
  - Bhutan
  - Brazil
  - Canada
  - Chile
  - China
  - Colombia
  - Costa Rica
  - Cyprus
  - Denmark
  - Ecuador
  - Fiji
  - Gabon
  - Greece
  - Germany
  - Ghana
  - Honduras
  - Hong Kong
  - Indonesia
  - Ireland
  - Israel
  - Italy
  - Jordan
  - Kazakhstan
  - Kenya
  - Kuwait
  - Lebanon
  - Malaysia
  - Maldives
  - Mauritius
  - Mexico
  - Morocco
  - Nepal
  - Netherlands
  - New Zealand
  - Nigeria
  - Oman
  - Pakistan
  - Palestine
  - Panama
  - Papua New Guinea
  - Portugal
  - Puerto-Rico
  - Qatar
  - Republica Dominicana
  - Russia
  - Saudia Arabia
  - Seychelles
  - Singapore
  - South Africa
  - Switzerland
  - Srilanka
  - Taiwan
  - Tanzania
  - Thailand
  - Turkey
  - U. A. E.
  - U. K.
  - U. S. A.
  - Uganda
  - Uruguay
  - Venezuela





**KalingaStone®**  
TERRAZZO, MARBLE & QUARTZ

Scan to download App



An ISO 9001 : 2015, ISO 14001 : 2015 and BS OHSAS 45001-2018 Certified Company.



Corporate Office:

Classic Marble Company Pvt. Ltd.: 15, Bhandup Village Road, Subhash Nagar,  
Bhandup (W), Mumbai - 400078, India. • T: +91-22 4140 4140 • F: +91-22 4140 4141  
E: [info@kalingastone.com](mailto:info@kalingastone.com) | W: [www.kalingastone.com](http://www.kalingastone.com)